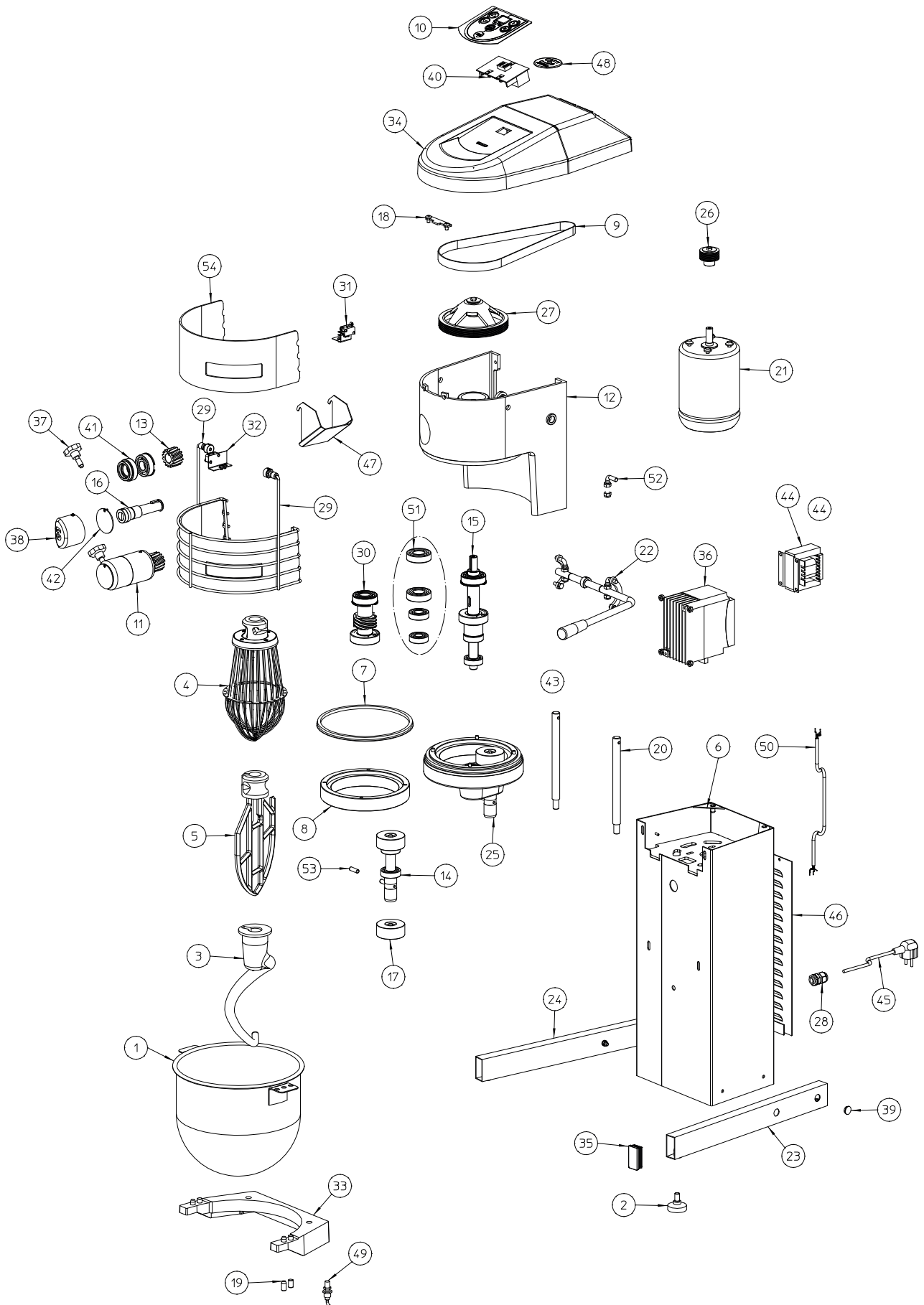


**BATIDORAS-MEZCLADORAS  
BE-10 / BE-10C**
**MIXERS  
BE-10 / BE-10C**
**BATTEURS-MÉLANGEURS  
BE-10 / BE-10C**

N.	Denominación	Description	Dénomination	Cod.
1	Caldero BE-10	Stainless steel bowl BE-10	Cuve BE-10	2509494
2	Pies goma	Rubber feet set	Ensemble de 4 pieds caoutchouc	2309017
3	Gancho amasador BE-10	Kneading tool set BE-10	Outil pétrisseur BE-10	2509429
4	Mezcladora BE-10	Mixing tool set BE-10	Outil fouet BE-10	2509427
5	Paleta BE-10	Beating tool set BE-10	Outil palette BE-10	2509428
6	Chasis BE-10 R	Chassis BE-10 R	Châssis BE-10 R	2509630
7	Junta V-ring V189 tipo L	V-ring V-189 L-type	Joint v-ringV189 TIPO L	2509557
8	Corona Z-74 BE-10	Gear Z-74 BE-10	Couronne Z-74 BE-10	2509556
9	Correa poly-v J-7 813	Poly-V belt J-7 813	Courroie Poly-V J-7 813	2509554
10	Teclado BE-10/20/30/40	Keyboard BE-10/20/30/40	CLAVIER BE-10/20/30/40	2509505
11	Toma accesorios BE-10	Attachment connection set BE-10	Prise accessoires BE-10	2509588
12	Cabezal BE-10	Head set BE-10	Tête BE-10	2509400
13	Corona toma accesorios BE-10	Rim set (attachment drive) BE-10	Couronne prise accessoires BE-10	2509401
14	Eje porta-útil BE-10	Tool-holder shaft set BE-10	Axe porte outil BE-10	2509402
15	Eje principal BE-10	Main shaft set BE-10	Axe principale BE-10	2509403
16	Eje toma accesorios BE-10	Attachment drive shaft set BE-10	Axe prise accessoires BE-10	2509404
17	Engranajes planetario BE-10	Planetary gear set BE-10	Pignons planetaire BE-10	2509405
18	Fijación tapa BE-10	Cover fixing set BE-10	Fixation couvercle BE-10	2509406
19	Guía caldero BE-10	Bowl guide set BE-10	Guide cuve BE-10	2509407
20	Guía elevación caldero BE-10	Bowl lifting guide set BE-10	Guide montée cuve BE-10	2509408
21a	Motor BE-10	Motor set BE-10	Moteur BE-10	2509409
21b	Motor BE-10C 230-400V	Motor set 230-400V BE-10C	Moteur 230-400V BE-10C	2509426
21c	Motor BE-20 230-400V	Motor set BE-20 230-400V	Moteur BE-20 230-400V	2509547
22	Palanca elevación caldero BE-10	Lever set bowl lifting BE-10	Levier montée cuve BE-10	2509410
23	Pata derecha BE-10	Foot set (right hand) BE-10	Pied droit BE-10	2509411
24	Pata izquierda BE-10	Foot set (left hand) BE-10	Pied gauche BE-10	2509412
25	Planetario BE-10	Planetary set BE-10	Planétaire BE-10	2509413
26	Polea motriz BE-10	Driving pulley set BE-10	Poulie motrice BE-10	2509414
27	Polea receptora BE-10	Driven pulley set BE-10	Poulie réceptrice BE-10	2509415
28	Prensaestopas PG-11	Stuffing box PG-11	Presse-étoupes PG-11	2509442
29	Protección caldero BE-10	Bowl protection set BE-10	Protection cuve BE-10	2509417
30	Sinfin rodamiento BE-10	Beraing drive set BE-10	Sans-fin roulement BE-10	2509418
31	Soporte micro protección BE-10	Protection microswitch holde set BE-10	Support microrrupteur protection BE-10	2509419
32	Soporte micro caldero BE-10	Bowl lifting microswitch holder set BE-10	Support microrrupteur cuve BE-10	2509420
33	Soporte caldero BE-10	Bowl holder set BE-10	Support cuve BE-10	2509421
34	Tapa mandos BE-10	BE-10 controls cover set	Couvercle commandes BE-10	2509422
35	Tapón tubo 50X25	Tube plug set 50X25	Bouchon tube 50X25	2509423
36a	Variador BE-10	Variator set BE-10	Variateur BE-10	2509424
36b	Variador BE-10C 403110	Variator set BE-10C	Variateur BE-10C	2509425
36c	Variador BE-10 380-440V	Variator BE-10 380-440V	VARIATEUR BE-10 380-440V	2509510
36d	Variador BE-10C 380-440V	Variator set BE-10C 380-440V	Variateur BE-10C 380-440V	2509511
36e	Variador BE-10 120V	Variator set BE-10 120V	Variateur BE-10 120V	2509516
36f	Variador BE-10C 120V	Variator set BE-10C 120V	Variateur BE-10C 120V	2509517
37	Fijación toma accesorios BE	Attachment drive fixing set BE	Fixation prise accessoires BE-10	2509436
38	Tapón cabezal	Head plug set	Bouchon tête	2509447
39	Tapón Ø15	Plug set Ø15	Bouchon Ø15	2509449
40a	Placa mandos BE	Print keyboard set (BE)	Plaque électronique clavier	2509450
40b	Placa mandos BE 380-440V	Print keyboard BE 380-440V	Tableau de commande BE 380-440V	2509545
40c	Placa mandos BE 120V	Print keyboard set BE 120V	Tableau de commande BE 120V	2509546
41	Retén + rodamiento toma accesorios	Attachment drive retainer + bearing set	Roulement-joint prise accessoires	2509458
42	Tapa toma accesorios BE	Attachment drive cover set BE	Bouchon prise accessoires BE	2509459
44	C. Reactancia DC (BE-10)	Reactance set DC (BE-10)	Réactance DC (BE-10)	2509548
45a	Cable manguera 3X1.5 UK	Hose wire set 3X1.5 UK	Câble gaine 3X1.5 UK	2009659
45b	Cable manguera env. 1~	Hose wire vac. 1~	Câble emb. sous-vide Mono	2149388
45c	Cable manguera 3X14AWG 6-20P CL	Hose wire 3X14AWG 6-20P CL	Câble gaine 3X14AWG 6-20P CL	2509549
46	Tapa trasera BE-10	Back cover BE-10	COUVERCLE ARRIERE BE-10	2509587
47	Cargador exterior BE-10	External loader BE-10	Chargeur extérieur BE-10	2509589
48	Adhesivo SAMMIC Ø60 plata	Sammic Adhesive Ø60 silver	Adhésif Sammic Ø60 ARGENT	2509599
49	Detector magnetico D10P	Detector megnetic set D10P	Détecteur magnétique D10P	2509555
50	Cableado BE-10	Electric wiring BE-10	Câblage BE-10	2509601
51	Rodamiento eje principal + eje portautíl BE-10	Bearing / main shaft + util shaft	Roulements axe principal + axe util	2509313
52	Palanca rosc. elevad. BM-11	Lever (threaded) BM-11	Levier élev. cuve BM-11	2509321
53	Pasadores porta-útil BM-11	Tool-holder bolt set BM-11	Goupilles porte outil bm11	2509338
54	Visor armazón BE-10	Frame viewer BE-10	Ecran protecteur grille BE-10	2509595



Nota: Todas estas especificaciones están sujetas a cambio sin previo aviso, debido a la permanente mejora del producto.  
 Note: These specifications are subject to change without prior notice due to continuous product improvement.  
 Note: Toutes ces spécifications peuvent être modifiées sans préavis dû à une permanente amélioration du produit.